



SKIRTEC GROUP PTY LTD

A.C.N. 074 107 805

Issue Date: 23rd September 2005

Revision: 17th January 2022

SKIRTEC TECHNICAL SUPPORT



INSTALLATION TIPS AND TECHNIQUES

C&D SERIES (C15035/50 & D15035/50)

This document covers key installation techniques which, if followed, will ensure an installer achieves a high standard of installation and efficiency.

This document does not replace the need to comply with Product Installation Documents or any technical regulations or standards applicable within the Electrical Industry.

The Index on Page 1 will assist in the search for specific issues.

If additional support is required please do not hesitate to contact Skirtec:



1800 064 435, 07 3375 6144 or 02 9674 9080



brisbaneoffice@skirtec.com.au or sydneyoffice@skirtec.com.au

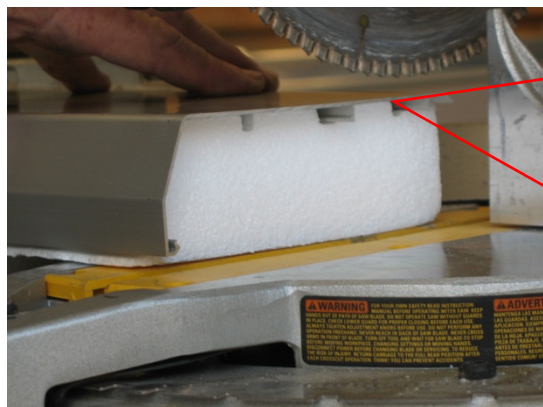
Index:

1. General Techniques	Page 1 & 2
2. Base Installation	Page 3 & 4
.. Corner Efficiency	Page 4
.. Earthing and Alignment	Page 4
3. Cover Up	Page 5 & 6
.. Outlet Mounting Kits	Page 5
.. Cabling Up	Page 5
.. Cover & Corners	Page 6
4. Other Matters	Page 7
.. Additional Security	Page 7
.. Column Base Folding	Page 7

General Techniques

Use the correct tools and techniques to ensure safety and quality workmanship:

- Use aluminium saw blades to cut base and cover and the Skirtec Cutting Block to cut cover sections.

**General Tip 1.**

Skirtec recommends the use of a 'drop/draw' saw with an aluminium cutting blade (Skirtec uses Tungsten Carbide tipped with minimum 100 teeth on 250mm diameter). Ensure the saw is set for accurate 90° cuts.

General Tip 2.

Use the cutting block (supplied free of charge), to ensure square cuts to covers. Don't cut through the block; position it adjacent to the 'cut through path'.

General Tip 3.

If 'saw-flick' occurs (usually blunt blade) cut down slowly first and then draw to avoid. Use cutting wax.

- Follow installation instruction provided.
- Take care with the installation of the base section as this ensures cover up is easy & clips well.
- Base sections must be fitted level along full system. Ensure adjoining sections of base align well.

**General Tip 4.**

Shoot a laser line or chalk line to keep the base installation level (or use a spirit level).

- Use appropriate tools and fasteners for attaching the base section. Generally fasteners are to be used along the base, top and bottom, with centers no greater than 800mm (into studs where applicable). Liquid nails may also be used as an addition to other fasteners.

General Techniques (cont)



General Tip 5.

Showing base installed onto concrete walls with the use of a nail gun (Skirtec uses a Hilti GX100 nail gun). Fasteners are shown top and bottom. It is recommended that a nail gun be used where possible, in preference to plugs, to significantly reduce the installation time.

- Maximise use of Factory Cuts to minimize gaps in ‘butt-up’ between cover sections and outlet kits. Gaps between base sections are not critical, as long as cable segregation is not compromised and adjoining sections of base are aligned properly to ensure cover up is undertaken properly.
- Both C and D may be used in wall and skirting applications.

Shown below is **C Series** Product:

Left profile – 150mm (high) x 50mm (deep)

Right profile – 150mm (high) x 35mm (deep)



D Series is recommended if bench high applications are required.

Wall Applications



Shown below is **D Series** Product:

Left profile 150mm (high) x 50mm (deep)

Right profile 150mm (high) x 35mm (deep)



D Series for 2 channel and **C Series** for 3 channel requirements.

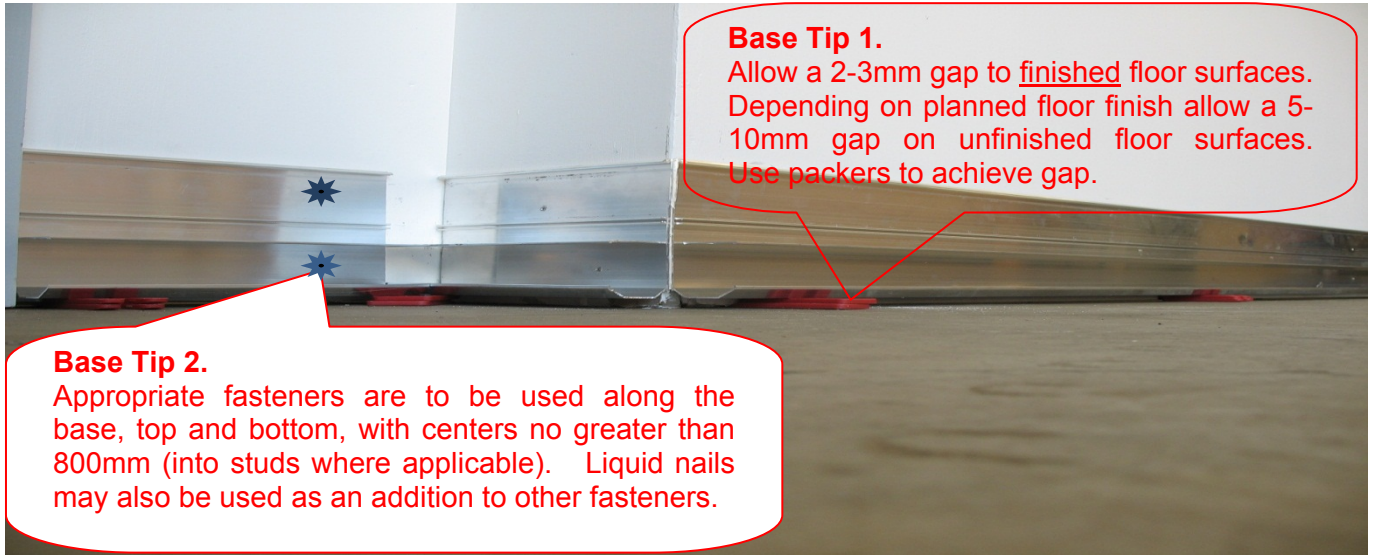
Skirting Applications



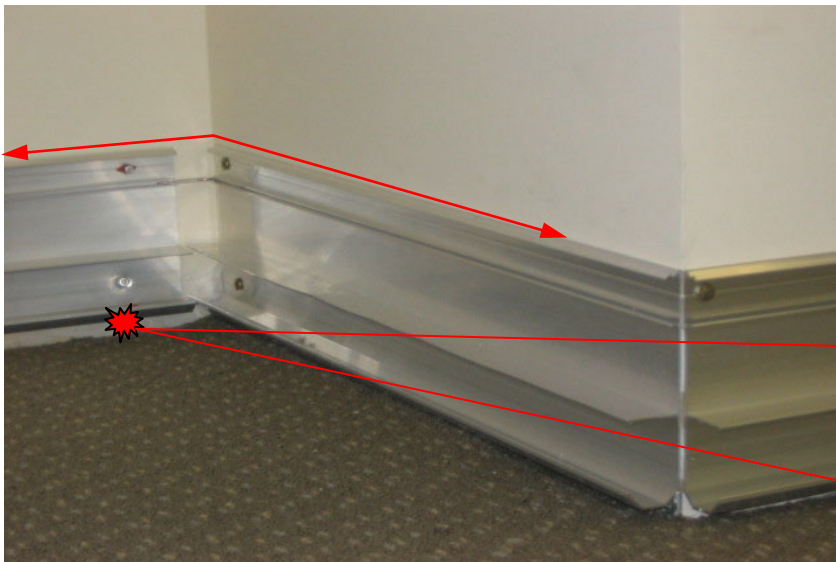
Base Installation

To ensure the cover system fits properly:

- Base sections must be fitted level (see General Tip 4) and ensure adjoining pieces line up evenly.



- Be aware of uneven floors; often rising into corners and dropping away to low points in the middle.



- Do not stress base into the wall, pack out if necessary and fasten into high points.

Base Installation (cont)

- With **D Series** (shown below), earthing/alignment rod is tapped into mount off channel, between all base sections, and crimped home (pliers/cutters/pinchers).



Base Tip 4.

For both C and D Series base it is recommended that straight-cut and fold be used for all external corners (do not cut through back plate). Internal corners (also shown) only need 'butt-up/overlap'. Mitre cuts are not generally necessary in base or cover. See also Tips under Columns&Corners.



Base Tip 5.

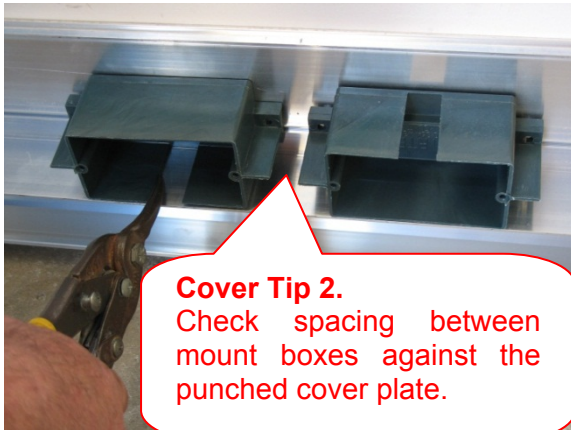
With **C Series** the earthing /alignment rod is crimped into the 'rolled over' earthing channel between all base sections.

Once the base section has been installed cable runs may be carried out for power and other services.

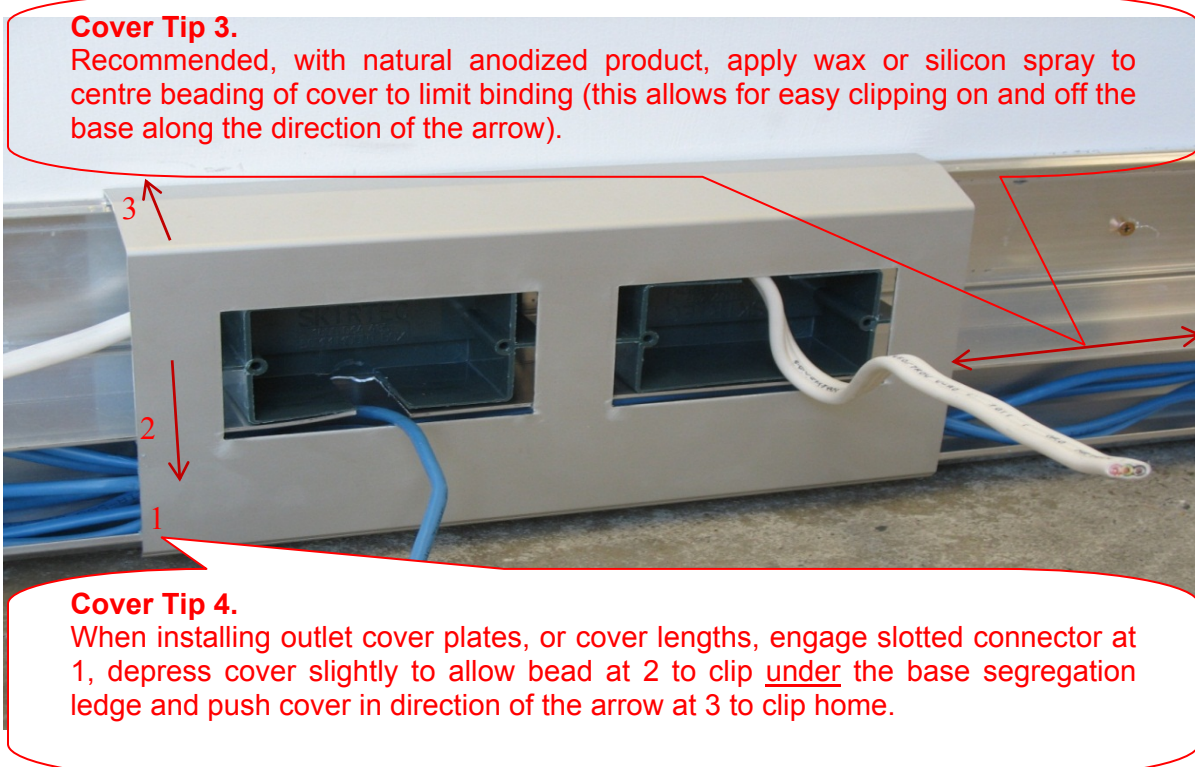
- Though not absolutely required Skirtec recommends the top channel (the mount-off channel in D Series) be used for power services and the bottom channel be used for data and other services. The mounting box (colour coded red for D35 and black for D50) is a fully enclosed mounting method thus maintaining segregation integrity (C35 and C50 provide for a dedicated mount off channel).

Cover Up

- Rely on Skirtec Factory Cover and Outlet Kit Cuts! Plan for on-site cuts to be into corners (as much as possible) and use a cutting block for all cover cuts (see General Tip 1 – 3).
- **First step** - installation of outlet mounting kits. The left picture shows a D15050 double plate mount kit being installed (cable access is cut through). The right image shows a C15050 single plate mount kit being installed (hole-saw cable access for top channel and cut through from bottom channel).



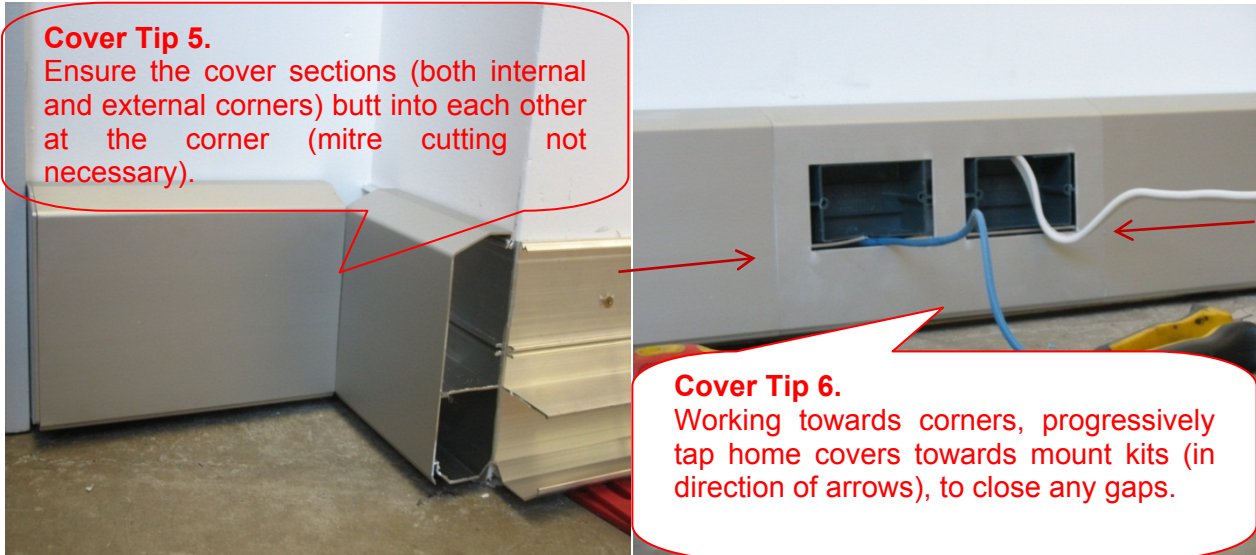
- **Second step** - cable up and then clip home cover plate.



Once outlet kits are in position the installation may be covered up through the installation of covers, corners and ends.

Cover Up (cont)

- Install covers towards corners and insert end stops. End Stops have lugs that use resistance against the cover and the base to stay in place. If in high traffic areas use dabs of liquid nails, or similar, on a couple of tabs to increase security of ends (or insert a small screw through the 'screw tab'/longer tab into the back wall of the base).



- Clip home corners. Engage the top tab into the back of the cover and press home the bottom lugs (listen for a definite 'click' home on both sides of the corner).

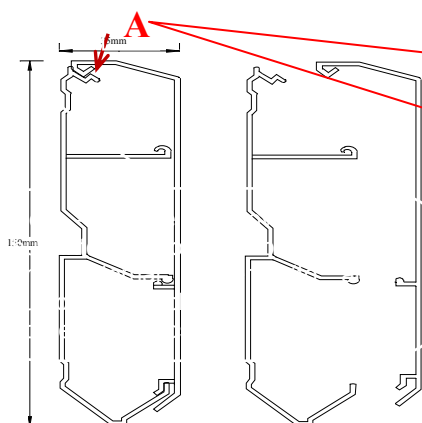


- The installation is now complete and may be cleaned with Spray and Wipe or something similar.

Other Matters

Additional Security - Skirtec C and D Series Products do not require “screw security”. The cover system was designed to be tool removable and not designed to incorporate “screw on” covers. Provided the duct has been correctly installed, any further security measures are unnecessary.

However, should the customer wish to include the added security of screws, the following drawings (C Series shown) indicate how this can be achieved as an on-site installation method. However Skirtec does not warrant the suitability of this method.

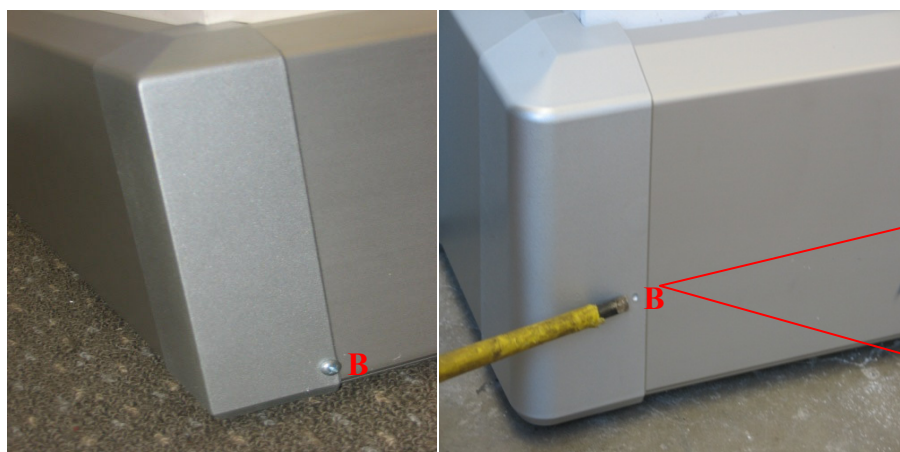


Other Tip 1.

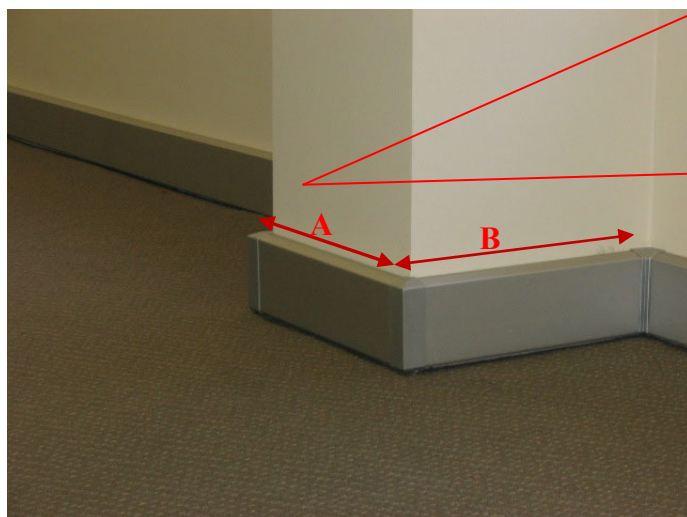
Pre-drill, using a No 1 Driver Bit, into point A and insert 3/8 inch, 2 gauge, pan Phillips zinc plated self-tapping screws, through the cover, into the corresponding base section. This will not penetrate through to cables.

Other Tip 2.

A Corner Screw (1/4 inch, 2 gauge) can be used to secure an external corner into place in high traffic areas (prevents the corner from being dislodged through hard knocks - not generally required). Not required for Internal Corners. The pictures show 2 positions (marked B) where these can be inserted without cable contact.



Columns and Corners



Other Tip 3.

When undertaking a double ‘straight-cut and fold’ external corner for columns, the measurement of the front of the column (A) is critical to ensure the base folds tightly. Do not cut fully through the back of the base.

Accurately measure the distance across the column (A) and position the saw blade to cut through the centre of each measurement mark (eg. if column is 600 mm).

Saw Blade Cuts



Side measurements (B) are not critical due to the ‘butt-up/overlap’ join on internal corners.