

Fast and Easy Installation.

The OE Elsafe HARRIER floorbox is one of the shallowest stainless steel floorboxes on the market yet it still provides an excellent solution for all of your power, data and AV requirements.

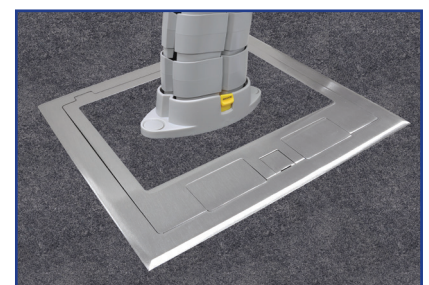
The HARRIER is ideal for use in open spaces providing a sleek and stylish stainless steel finish allowing services directly to workstations, conference and training rooms where other access is not practical.

The HARRIER is designed for use in both raised access floors and concrete floors. The HARRIER design allows room for cables to be stored within the box when not in use. The recessed lid permits carpet to be installed to discretely merge in with its surroundings.

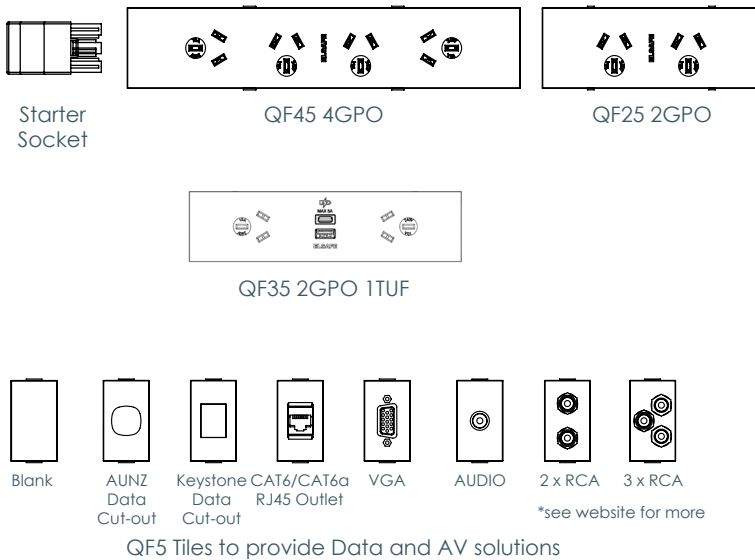


### USPs:

- Small - 244 x 187mm cutout
- Shallow Screed at 70 mm
- Sturdy with Good Capacity
- Available in Recessed or full Stainless Steel Lid
- Compatible with QIKFIT Series



## Common Components



## Features

The smaller size of the HARRIER is ideal for situations where depth and size restrictions prohibit a larger floor box.

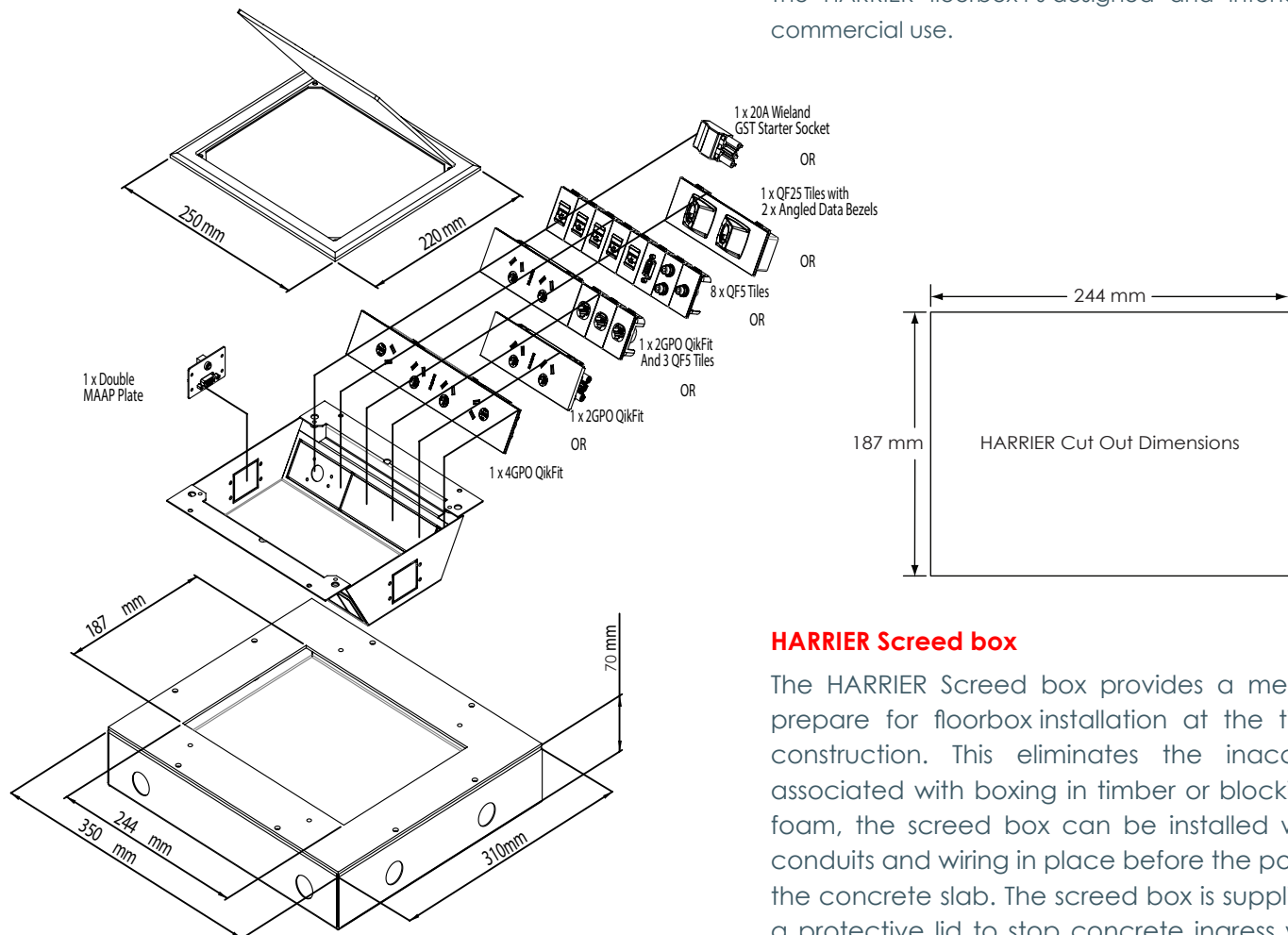
The 2 inside walls of the HARRIER are designed to accept many options including 20A starters, either 2 or up to 4 GPO's and a range of Data and AV fittings in QF5 Tiles. There are 2 MAAp snip-outs on the ends of the box to allow for on-site AV installations.

The GPO's can be hardwired or soft wired to provide design flexibility.

The HARRIER floorbox has been designed to be reusable, relocatable and can be easily retrofitted with OE Elsafe's many options.

Optional extra: for high volumes of cable that require distribution in a controlled method a MESSENGER MPO surface mount grommet can be installed onto the HARRIER Lid.

The HARRIER floorbox is designed and intended for commercial use.



## HARRIER Screed box

The HARRIER Screed box provides a method to prepare for floorbox installation at the time of construction. This eliminates the inaccuracies associated with boxing in timber or blocking with foam, the screed box can be installed with the conduits and wiring in place before the pouring of the concrete slab. The screed box is supplied with a protective lid to stop concrete ingress which is removed to install the HARRIER floorbox at a later stage. Alternatively the HARRIER Screed Box can be cut into the existing concrete floor slab.