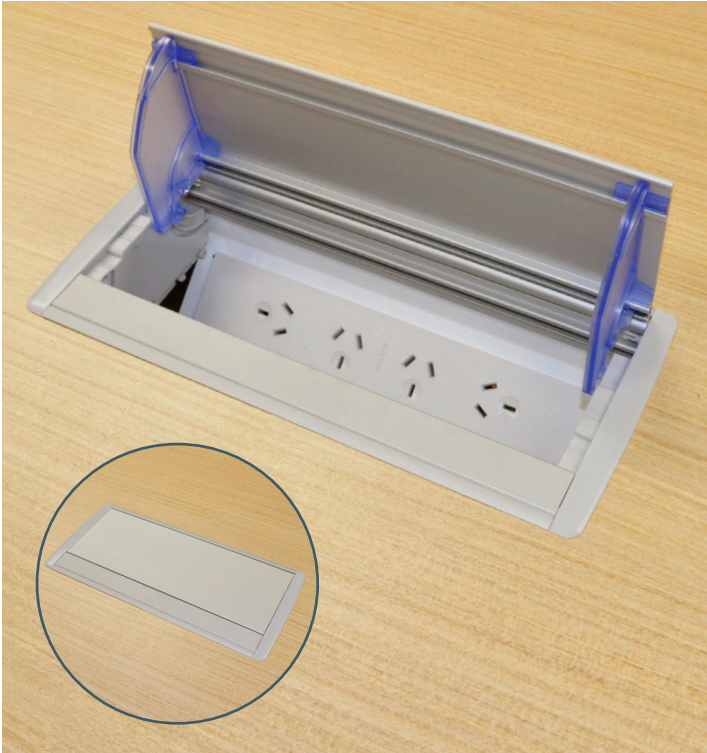


Proudly representing the Elsafe range of quality products.



Axxess is designed as a quick and easy to install in-desk box that provides connectivity to services for boardroom tables and workspaces.

AXXESS is manufactured using environmentally safe and recyclable components and is the ideal solution to provide easy access to power, TUF USB fast charging, data and AV services. TUF-HP USB C laptop charging is also available as an option.

The lid of the AXXESS table box incorporates cable guides at both ends to guide and protect cables.

Available in **black, white or clear anodised aluminium**, Axxess comes in two standard sizes; QF25 or QF45 or alternatively the chassis can be banked together for longer custom lengths.

The unique locking arm system ensures that AXXESS is securely fitted to the work surface using purpose designed screws at each end which are then covered with screw cap covers.

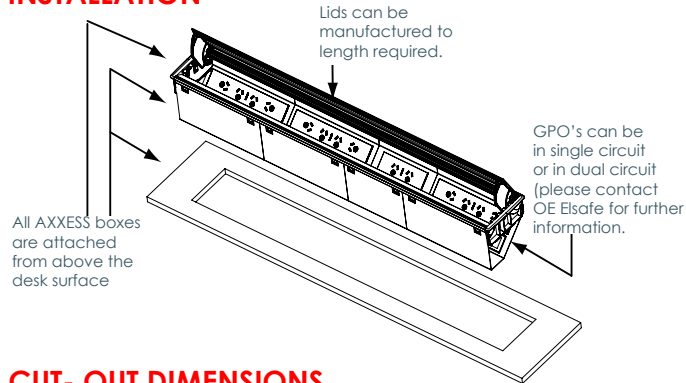


COMMON COMPONENTS

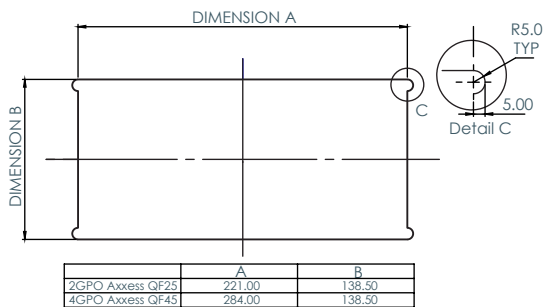


* Wide range of Data / AV cutouts and couplers available on request
QikFIT Modules available as standard in Black or White

INSTALLATION



CUT- OUT DIMENSIONS



FEATURES

Two Sizes Available: Axxess QF25 or Axxess QF45. Axxess utilises the

Power and Data configurations available

- Power or Data only
- Power and USB Fast Charging
- Combined (Power, USB Fast Charging & Data/AV)
- TUF-HP (high powered) USB Laptop Charging option
- International Sockets available on request

Reversible USB A Port: Accepts cable both ways.

Insulation: QikFIT modules with reinforced insulation.

Testing: 100% testing – continuity, polarity, insulation & earth.

AXXESS Lids: AXXESS Lids come in two standard sizes. Custom lengths available when connecting multiple chassis together. AXXESS lids available without the chassis as a through desk solution.

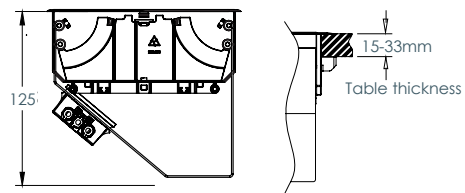
Cable Flap: Protects connected cables when lid is closed.

Cable Guides at both ends: Guides cables towards the lip to protect cables.

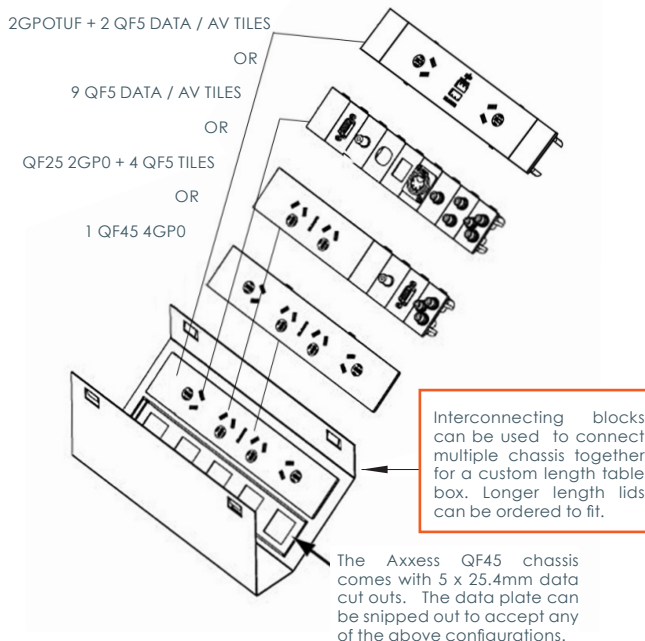
Fitting: Please see website for detailed fitting instructions.

Colours: Lid/Frame - Natural anodised aluminium or powder coated black or white. Chassis – Powder coated black or white.

Axxess is designed and intended for commercial use.



AXXESS QF45 EXPLODED VIEW



AXXESS QF25 EXPLODED VIEW

